

Registering Your Computer

First you will need to connect to either our wireless network, or our cat5 network. (*see below*). Upon connection it should re-direct you to our registration page. If it does not, type **10.5.254.252** into the address bar and it will direct you to registration. Once there, read over the access policy, check the box if you agree, and register using your DBU username and password. Then restart your computer.

Accessing the Network

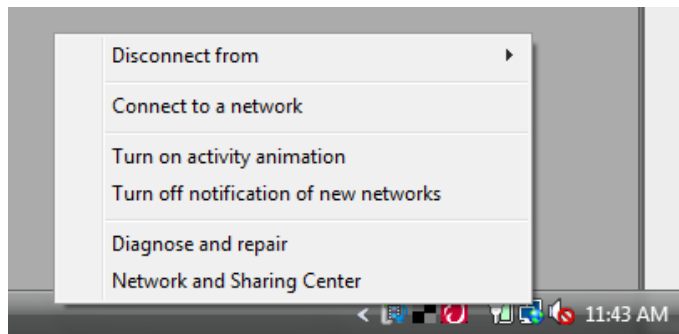
The following documentation is to demonstrate how to change access points when consuming to DBU's wireless network using Vista.

All the access points are labeled individually to give you an option of which one you would like to connect to providing you with a stronger internet connection.

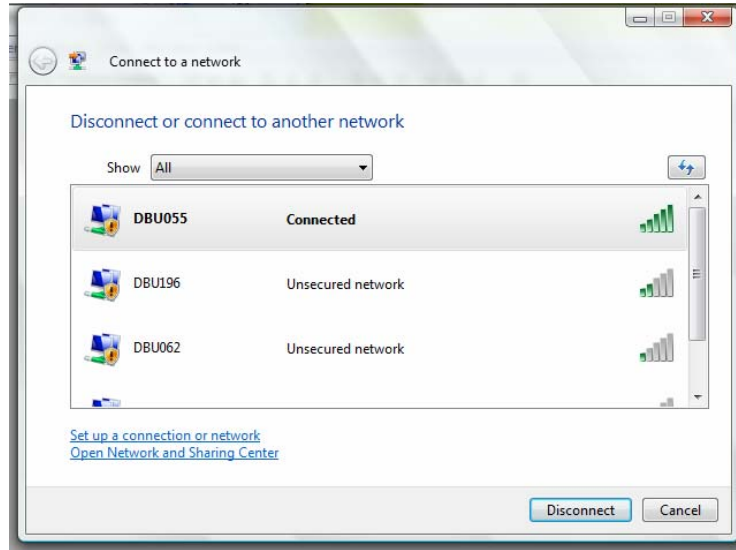
1. First, on the lower right hand side of the screen you will see your wireless connection.



2. Right click on this icon. This window will appear. Click on the "connect to a network" button.



3. When you click on that button, this screen will appear. After it does choose the one with the best signal, and double click on it.



After this you will be connected to the network and be able to click the browser you are using and begin to use the internet.