

Registering Your Computer -Students

First you will need to connect to either our wireless network or our cat5 (wired) network (*see below*). Upon connection, your browser should re-direct you to our registration page. If it does not, type **10.5.254.252** into the address bar and it will direct you to registration. Once there, read over the access policy, check the box if you agree (you cannot register if you do not agree), and register using your DBU username and password. Restart your computer.

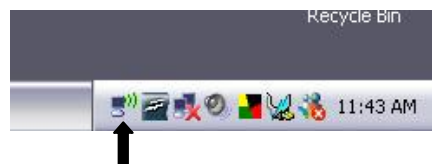
Accessing the Network

Wireless Connections:

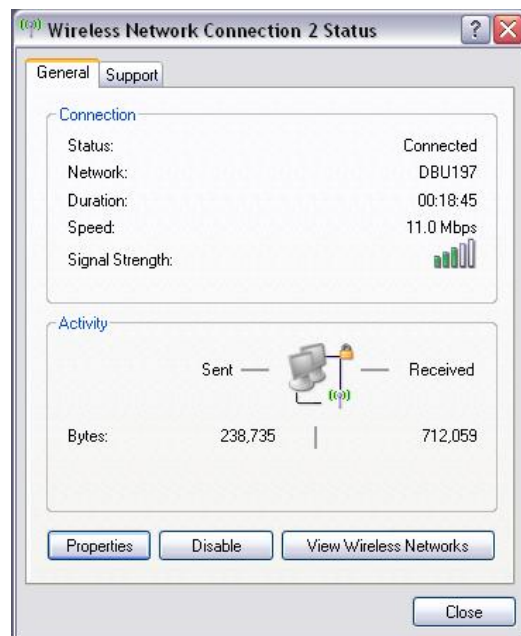
The following documentation is to demonstrate how to change access points when connecting to DBU's wireless network using Windows XP with Service Pack 2.

All access points are labeled individually to allow you to select the one providing you with a stronger Internet connection.

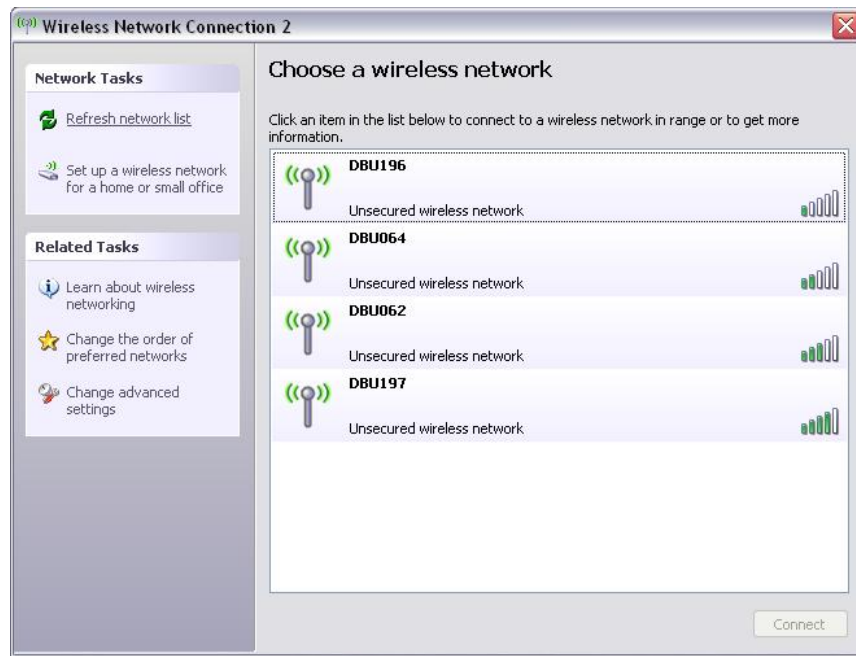
1. First, on the lower right hand side of the screen you will see your wireless connection.



2. Double-click on the small computer icon. Then this window will appear.



3. Click on “**View Wireless Networks**”, then this window will appear.



You will see all available Internet access points within range of your wireless card. Select the access point with the strongest signal strength by clicking twice on the antenna or by highlighting the access point and clicking "Connect". In this case, you would probably want to select “DBU197”.

Using this procedure, you should be able to connect to any access point across campus.

WIRED

This process allows you to use the same network as the wireless, but you use a cable instead of wireless transmissions.

1. Plug the CAT5 cable into the back of the computer and the outlet in the wall.
2. Register your computer if you have not already done so.

If you have any problems or questions, call Support at 214-333-5500.